

**362-18**

**362-24**

**LUMINOUS BOWL**

Design  
Sustainability  
Value



print this page



email this page to a colleague



installation instructions



interactive submittal drawings



application photos

**COMPANION**



**FEATURES**

- Simple, clean design.
- Luminous bowl with downlight component.
- Available in two sizes.
- Available with metal stem.
- Tool-free relamping.

**ECO INFO**

**METALS:** Aluminum and brass with the highest available recycled content for lower embodied energy. Both metals are valuable and recyclable at the end of the products useful life. For more information see "GENERAL INFO"

**FINISHING:** Aluminum and Antique Brass finishes are sealed with a hand-applied bees wax. No paint or lacquer is used in order to avoid pollution associated with the manufacture and application of these substances. Satin Brass is clear-coated with a very low VOC water-based coating. Paint finishes are low VOC and oven cured.

**ENERGY:** Designed exclusively for compact fluorescent lamps using HPF electronic ballasts.

**MATERIALS**

- Solid brass or aluminum metal work, hand finished.
- Luminous bowl is white acrylic with a matte finish.

**FINISHES**

**SAL** Satin Aluminum

**SB** Satin Brass

**CCP** Custom Color Painted finish

Standard metal finishes are hand satined and either waxed or sealed with a water-based clear coat. Other metal finishes are available. Contact factory.

**LAMPING**

362-18: 1-CF26W or 32WTTT, Gx24q base.

362-24: 1-CF26, 32, 42 or 57WTTT, Gx24q base, except Gx24q-5 for 57W.

Lamps not included.

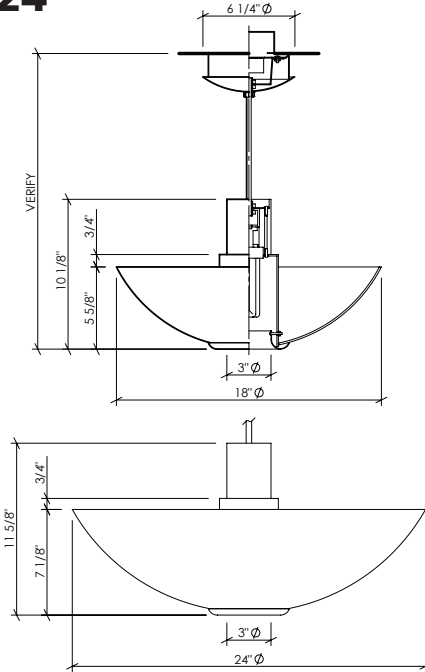
**BALLAST**

Integral electronic HPF, 120V/277V.



Shown with optional faux finish

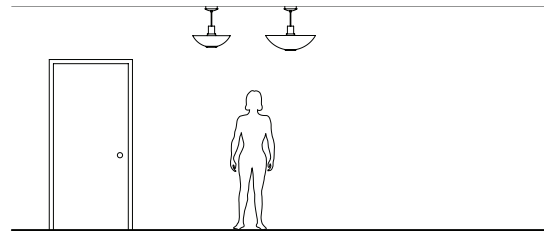
**362-18**  
**362-24**



**OPTIONS**  
**FAUX:** Hand applied faux finish available. Specify **FAUX**.  
**STEM:** Available with a metal stem & swivel canopy, specify **STEM**.  
**DIMMING:** Lutron and Advance dimming available.  
**EMERGENCY BATTERY PACK:** Remote mounted EBP, specify **REM**.



**PHOTOMETRICS**  
 Lighting Sciences Report 22544  
 Fixture Efficiency: 74.1%



**HANG HEIGHT:** Standard overall hang height is 24" (ceiling to bottom of fixture). There is an additional charge for hang heights greater than standard. Minimum recommended is 18"

**MOUNTING:** Standard J-box or plaster ring.

**WEIGHT:** 6 lbs

**VARIATIONS / MODIFICATIONS**

- Special finishes
- Addition of decorative detail
- Different bowl size

**SPEC GUIDE** SAMPLE SPEC: 362-18-CF1/26-120-SB-REM-24"

CAT#	SIZE	LAMPING	VOLT	FINISH	OPTION	QA
<input type="checkbox"/> 362	<input type="checkbox"/> 18 <input type="checkbox"/> 24	<input type="checkbox"/> CF1/26 <input type="checkbox"/> CF1/32 <input type="checkbox"/> CF1/42 <input type="checkbox"/> CF1/57	<input type="checkbox"/> 120 <input type="checkbox"/> 277	<input type="checkbox"/> SAL <input type="checkbox"/> SB <input type="checkbox"/> CCP	<input type="checkbox"/> FAUX <input type="checkbox"/> REM <input type="checkbox"/> STEM	<input type="checkbox"/> 24" STD <input type="checkbox"/> SPECIFY

**NOTE:** Standard electronic ballast for 353-12 is multi-volt and multi-wattage. Fixture will accommodate 26 or 32 watt lamps. For 353-16 26, 32 or 42W lamps or 1-57W, multi-volt.



Our fixtures are handcrafted here in the USA using the highest quality materials.