

UPDATED 3/15

**570-25 IEM**  
**570-37 IEM**  
**570-49 IEM**



## VANITY FIXTURE

Design  
Sustainability  
Value



print this page



email this page to a colleague



installation instructions



interactive submittal drawing

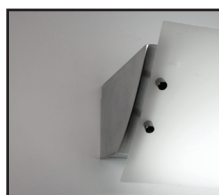


application photos

## COMPANION



DESIGN: DAVID MALMAN



## FEATURES

- Available in 3 sizes.
- Energy efficient low glare light.
- Sand cast aluminum with 100% recycled content.
- Available with T8 or T5 lamps.

## ECO INFO

**METALS:** Sand cast aluminum end caps are made from 100% recycled aluminum. Other aluminum parts have the highest available recycled content for lower embodied energy and are valuable and recyclable at the end of the product's useful life. For more information see "GENERAL INFO"

**FINISHING:** Solid, natural metal finishes are sealed with a hand-applied bees wax. No paint or lacquer is used in order to avoid pollution associated with the manufacture and application of these substances. Clear coat finishes are available. Paint finishes are low VOC and oven cured.

**ENERGY:** Designed exclusively for fluorescent lamps using HPF electronic ballasts.

## MATERIALS

- Sand cast aluminum with 100% recycled content, hand finished.
- Luminous shield is extruded white acrylic with a matte finish.

## FINISHES

**SAL** Satin Aluminum      **CCP** Custom Color Painted finish

**MW** Matte White

Standard metal finishes are hand satined and waxed. Other metal finishes are available. Contact factory.

## LAMPING

25": **CF:** 2-T8/17W or 2-T5/24HO. Lamps not included.  
**LED:** 1-14W array, 2100 lumens, 3000K, 80+ CRI.  
Supplied with fixture.

37": **CF:** 2-T8/25W or 2-T5/39HO. Lamps not included.  
**LED:** 3-arrays, 21W total, 3200 lumens, as above.  
Supplied with fixture.

49": **CF:** 2-T8/32W or 2-T5/50HO. Lamps not included.  
**LED:** 2-arrays, 28W total, 4200 lumens, as above.  
Supplied with fixture.

## BALLAST

**CF:** Integral electronic HPF, 120V/277V.

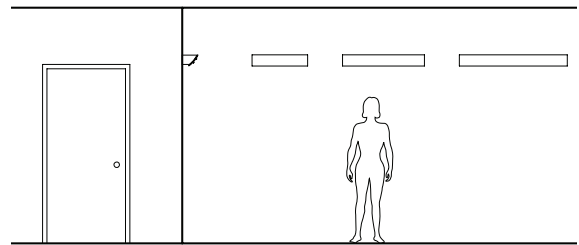
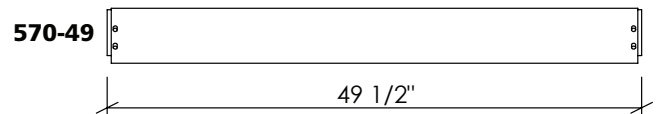
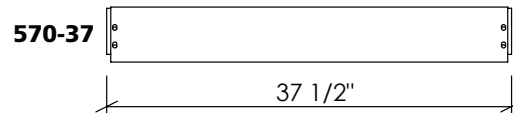
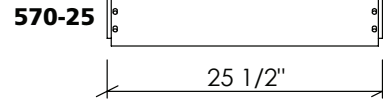
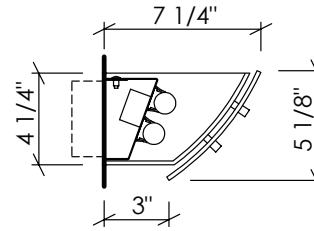
**LED:** Integral driver is multi-volt 120/277 and is 0-10V dimmable.



999 Montague St • San Leandro, CA 94577 • ph 510.357.0171 • fax 510.357.3832 • [www.bordenlighting.com](http://www.bordenlighting.com)



**570**



**PROJECT:** St. Peter's Place  
HUD Housing - San Francisco, CA  
**ARCH:** Herman Colliver Locus - San Francisco, CA  
**LTG DES:** ALD/David Malman

#### OPTIONS

**DIMMING:** Electronic dimming ballast available.

**EMERGENCY BATTERY PACK:** Integral EBP, specify **IEM**.

**MOUNTING:** Standard J-box or plaster ring.

**WEIGHT:** 5 lbs

#### VARIATIONS / MODIFICATIONS

- Special finishes
- Addition of decorative detail
- Special lengths

## SPEC GUIDE

SAMPLE SPEC: 570-T8/17-120-SAL

| CAT#                            | LAMPING                          | VOLT                         | FINISH                       | OPTION                        |
|---------------------------------|----------------------------------|------------------------------|------------------------------|-------------------------------|
| <input type="checkbox"/> 570-25 | <input type="checkbox"/> T8/17   | <input type="checkbox"/> 120 | <input type="checkbox"/> SAL | <input type="checkbox"/> FAUX |
| <input type="checkbox"/> 570-37 | <input type="checkbox"/> T8/25   | <input type="checkbox"/> 277 | <input type="checkbox"/> MW  | <input type="checkbox"/> IEM  |
| <input type="checkbox"/> 570-49 | <input type="checkbox"/> T8/32   |                              | <input type="checkbox"/> CCP |                               |
|                                 | <input type="checkbox"/> T5/24H0 |                              |                              |                               |
|                                 | <input type="checkbox"/> T5/39H0 |                              |                              |                               |
|                                 | <input type="checkbox"/> T5/50H0 |                              |                              |                               |
|                                 | <input type="checkbox"/> LED/16  |                              |                              |                               |
|                                 | <input type="checkbox"/> LED/24  |                              |                              |                               |
|                                 | <input type="checkbox"/> LED/32  |                              |                              |                               |

**BORDEN**  
LIGHTING

999 Montague St • San Leandro, CA 94577 • ph 510.357.0171 • fax 510.357.3832 • [www.bordenlighting.com](http://www.bordenlighting.com)

 IBEW Labelled

**LIGHTING  
FIXTURES**  
  
**MADE IN USA**

Our fixtures are handcrafted here in the USA using the highest quality materials.