

UPDATED 6/17

552-8 ADA

552-9 LED ADA Optional



LUMINOUS SCONCE

Design
Sustainability
Value



print this page



email this page to a colleague



installation instructions



interactive submittal drawing

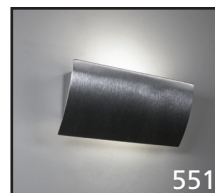


application photos



Link to F.P. Hud Housing

COMPANION



551

DESIGN: DAVID MALMAN



FEATURES

- Available in two sizes.
- Clean, simple design is ADA compliant.
- Sand cast aluminum with 100% recycled content.
- Tool-free relamping.

MATERIALS

- Sand cast aluminum with 100% recycled content, hand finished.
- Luminous shield is extruded white acrylic with a matte finish. Available with 100% recycled polyethylene with a matte finish.

FINISHES

SAL Satin Aluminum

MW Matte White

CCP Custom Color Painted finish

Standard metal finishes are hand satined and waxed.

LAMPING

8"w: 1-CF13 DTT, G24q base. (CF only)

9"w: CF: 1-CF26 DTT, Gx24q base.

Lamps not included.

LED: 1- 10W array, 1230 lumens, 3000k, 80+CRI.

BALLAST/DRIVER

CF: Integral electronic HPF, 120V/277V.

LED: Integral driver is 120/277V and 0-10V dimmable.

Triac dimming available.

ECO INFO

METALS: Sand cast aluminum end caps are made from 100% recycled aluminum. Other aluminum parts have the highest available recycled content for lower embodied energy and are valuable and recyclable at the end of the product's useful life. For more information see "GENERAL INFO"

LUMINOUS SHIELD: Available with a luminous shield made from 100% recycled polyethylene.

FINISHING: Solid, natural metal finishes are sealed with a hand-applied bees wax. No paint or lacquer is used in order to avoid pollution associated with the manufacture and application of these substances. Clear coat finishes are available. Paint finishes are low VOC and oven cured.

ENERGY: Designed exclusively for compact fluorescent lamps using HPF electronic ballasts or LEDs.

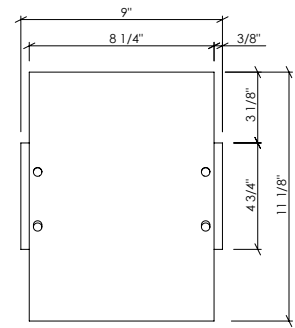
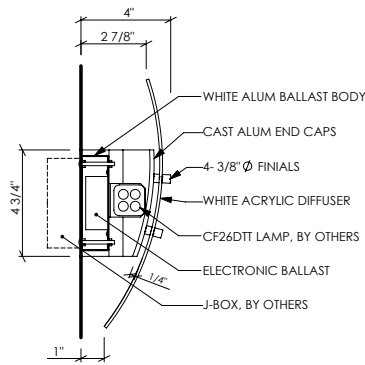


460 Roland Way • Oakland, CA 94621 • ph 510.357.0171 • fax 510.357.3832 • www.bordenlighting.com

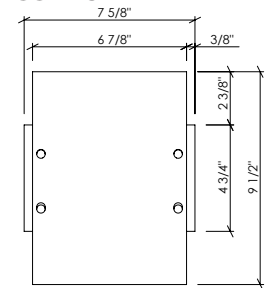


552-8

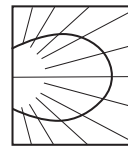
552-9



552 - 9



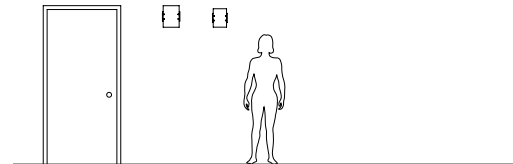
552 - 8



PHOTOMETRICS

Lighting Sciences Report No. 23670

Fixture efficiency 73.2%



VARIATIONS / MODIFICATIONS

- Special finishes
- Addition of decorative detail

OPTIONS

FAUX: Hand applied faux finish available. Specify **FAUX**.

DIMMING: LED: 0-10V standard. Triac dimmable available.

EMERGENCY BATTERY PACK: Remote mounted EBP, specify **REM**. Not available for **LED**.

MOUNTING: Standard J-box or plaster ring.

WEIGHT: 4 lbs

SPEC GUIDE SAMPLE SPEC: 552-CF1/26-120-SAL-FAUX

CAT#	SIZE	LAMPING	VOLT	FINISH	OPTION
<input type="checkbox"/> 552	<input type="checkbox"/> 8	<input type="checkbox"/> CF1/13	<input type="checkbox"/> 120	<input type="checkbox"/> SAL	<input type="checkbox"/> PS
	<input type="checkbox"/> 9	<input type="checkbox"/> CF1/26	<input type="checkbox"/> 277	<input type="checkbox"/> MW	<input type="checkbox"/> FAUX
		<input type="checkbox"/> LED1/10		<input type="checkbox"/> CCP	<input type="checkbox"/> REM



Our fixtures are handcrafted here in the USA using the highest quality materials.



460 Roland Way • Oakland, CA 94621 • ph 510.357.0171 • fax 510.357.3832 • www.bordenlighting.com