

UPDATED 3/15

510 NEW

LED ADA

BAFFLE SCONCE

Design
Sustainability
Value



DESIGN: ALLEN REAVES

Shown with Satin Aluminum.



print this page



email this page to a colleague



installation instructions



interactive submittal drawing



FEATURES

- Purpose-built for LED
- ADA compliant
- Unique shape fits many architectural styles.

ECO INFO

METALS: Aluminum parts have the highest available recycled content for lower embodied energy. All metals are valuable and recyclable at the end of the product's useful life. For more information see "GENERAL INFO"

FINISHING: Solid, natural metal finishes are sealed with a hand-applied bees wax. No paint or lacquer is used in order to avoid pollution associated with the manufacture and application of these substances. Clear coat finishes are available. Paint finishes are low VOC and oven cured.

ENERGY: Designed exclusively for LEDs using HPF electronic drivers.

MATERIALS

- Aluminum, hand finished
- Diffuser is white acrylic.

FINISHES

SAL Satin Aluminum

MW Matte White

CCP Custom Color Painted finish

Standard metal finishes are hand satined and waxed. Other metal finishes are available. Contact factory.

LAMPING

1-10W LED arrays, 1050 lumens or 1-14W, 1430 lumens, both 3000K, 80 CRI

DRIVER

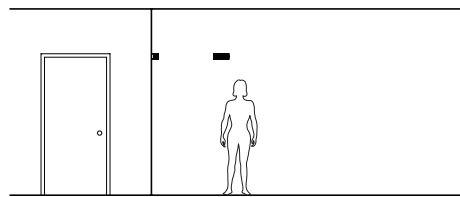
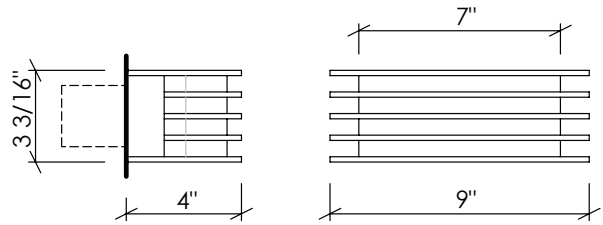
Integral HPF electronic driver is multi volt 120/277 and is 0-10V dimmable. Triac dimming is available for 120V.



999 Montague St • San Leandro, CA 94577 • ph 510.357.0171 • fax 510.357.3832 • www.bordenlighting.com



510



VARIATIONS / MODIFICATIONS

- Special finishes
- Addition of decorative detail

NOTE: Standard electronic driver is multi-volt and 0-10V dimmable. Two-wire incandescent dimming available for 120V.

MOUNTING: Standard J-box or plaster ring

WEIGHT: 4 lbs

SPEC GUIDE SAMPLE SPEC: 510-LED1/10-120-SAL

CAT#	LAMPING	VOLT	FINISH	OPTION
<input type="checkbox"/> 510	<input type="checkbox"/> LED/10 <input type="checkbox"/> LED/14	<input type="checkbox"/> 120 <input type="checkbox"/> 277	<input type="checkbox"/> SAL <input type="checkbox"/> MW <input type="checkbox"/> CCP	<input type="checkbox"/> FAUX



Our fixtures are handcrafted here in the USA using the highest quality materials.

