

721 IEM

WEDGE DOWNLIGHT WET LOCATION

Design
Sustainability
Value



Shown in Natural Bronze with acrylic lens.



print this page



email this page to a colleague



installation instructions

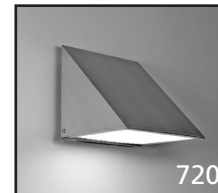


interactive submittal drawing



application photos

COMPANIONS



FEATURES

- Timeless, classic design.
- Cutoff design combined with low glare.
- Available with integral emergency battery.
- Available with photocell and/or OCC sensor.

MATERIALS

- Solid bronze, aluminum or stainless steel hood.
Cast aluminum backplate.
- High transmission clear refractive acrylic for CF & LED.
- Aluminum hexcel louver.
- Refractive glass for MH lamping.

FINISHES

SGB Semi-Gloss Black
SGW Semi-Gloss White

SGS Semi-Gloss Silver
SGBZ Semi-Gloss Bronze

PREMIUM FINISHES

NBZ Natural Bronze
SSS Satin Stainless Steel

CAA Clear Anodized Aluminum
CCP Custom Color Painted

LEDs

ARRAYS	WATTAGE	RATED LUMENS	EFFICACY
2-11W	22W	3380	154 lm/w
2-16W	32W	4380	151 lm/w
2-10W	40W	5800	145 lm/w

Standard LEDs are 3000K and 80CRI. 90CRI available.
Available CCT: 2700K and 3500K at no additional charge.

AMBER LEDs

ARRAYS	WATTAGE	RATED LUMENS	EFFICACY
2-7W	14W	2000	143 lm/w
2-13W	26W	3400	130 lm/w
2-25W	50W	7000	140 lm/w

Amber LEDs are 2200K and 65CRI. Go **HERE** to learn more about amber LEDs.

DRIVERS

Standard drivers are 120/277V and 0-10V dimming. Triac/ELV drivers are available.



PHOTOMETRICS

LSI Report No. 30845

Note: Fixture was tested with 2-14W LEDs rated at 1410lm each; new LED is rated at 16W and 2415 lm or 70% more.

Adjust light levels accordingly.





Shown in Satin SS with optional hexcel louver.

OPTIONS

LENS: Standard lens is Satin Ice, with high transmission and diffusion.

HEXCELL LOUVER: Optional Hexcell open louver offers lower glare with higher output directly below, but less light side and front. Specify **HXL**.

PHOTOCELL: For photocell, specify **PH**.

OCCUPANCY SENSOR: Microwave occupancy sensor, combined with daylight control, and offers on/off function. Specify **OCC1**. Microwave sensor, combined with daylight control, that allows low power standby. Specify **OCC2**. Note that the sensor is internally mounted and not visible.

EMERGENCY BATTERY PACK: Integral battery is available for wattages up to 32W. Specify **IEM**. Note that the IEM option cannot be combined with the occupancy sensor option.

NOTE: This fixture is suitable for wet or dry locations. For wet locations use only as a downlight.

MOUNTING: Standard J-box or plaster ring.

WEIGHT: 6 lbs

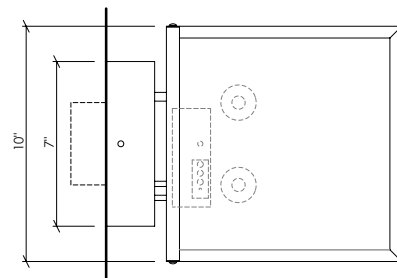
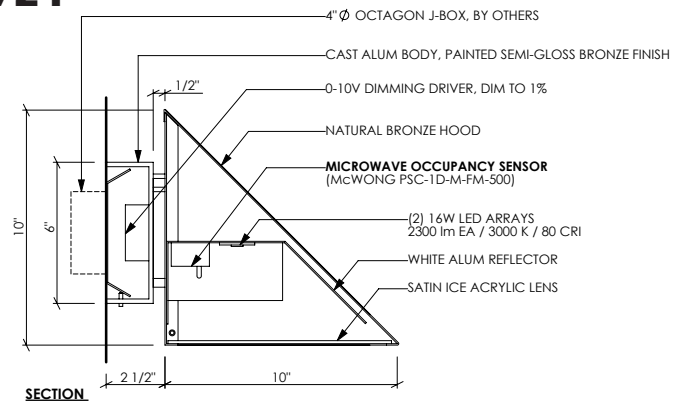
SPEC GUIDE

SAMPLE SPEC: 721-LED2/16-120-SGB-HXL

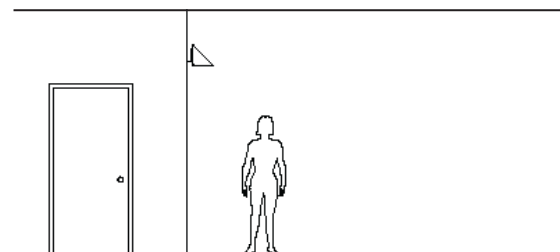
CAT#	-	LAMPING	-	VOLT	-	FINISH	-	OPTION
<input type="checkbox"/> 721		<input type="checkbox"/> LED/22		<input type="checkbox"/> 120		<input type="checkbox"/> NBZ		<input type="checkbox"/> HXL
		<input type="checkbox"/> LED/32		<input type="checkbox"/> 277		<input type="checkbox"/> SSS		<input type="checkbox"/> PH
		<input type="checkbox"/> LED/40		<input type="checkbox"/> 347 *		<input type="checkbox"/> CAA		<input type="checkbox"/> IEM
		<input type="checkbox"/> LEDAM/14		*call factory		<input type="checkbox"/> SGB		<input type="checkbox"/> OCC1
		<input type="checkbox"/> LEDAM/26				<input type="checkbox"/> SGW		<input type="checkbox"/> OCC2
		<input type="checkbox"/> LEDAM/50				<input type="checkbox"/> SGBZ		
						<input type="checkbox"/> CCP		

Learn more about
Natural Bronze
click here

721



NOTE: Call factory for CF or MH lamping.



VARIATIONS / MODIFICATIONS

- Special finishes
- Special sizes
- Conduit power feed



IBEW Labelled

**LIGHTING
FIXTURES**



Our fixtures are handcrafted here in the USA using the highest quality materials.



Certified by the
International Park-Sky Assoc.



2355 Verna Ct • San Leandro, CA 94577 • ph 510.357.0171 • fax 510.357.3832 • www.bordenlighting.com