

UPDATED 8/15

720 LED Opt. New improved LED array & dimming driver.

WEDGE DOWNLIGHT WET LOCATION

Design
Sustainability
Value



print this page



email this page to a colleague



installation instructions



interactive submittal drawing

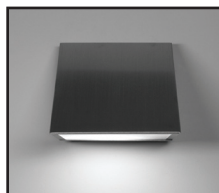


application photos

COMPANIONS



Shown in Natural Bronze with optional hexcel louver.



FEATURES

- Timeless, classic design.
- Available with photocell.
- Cutoff design combined with low glare.
- One of a family of four sizes.

MATERIALS

- Solid bronze or stainless steel hood. Aluminum is used for painted finishes. Cast aluminum backplate.
- High transmission clear refractive acrylic lens.
- Aluminum hexcel louver.

FINISHES

NBZ Natural Bronze
SSS Satin Stainless Steel
SGB Semi-Gloss Black
SGW Semi-Gloss White
SGBZ Semi-Gloss Bronze

CAA Clear Anodized Aluminum
CCP Custom Color Painted
SGS Semi-Gloss Silver

*Learn more about
Natural Bronze
click here*

LAMPING

CF: 1 CF26, 32W or 42WTTT, Gx24q base.

Lamps not included.

LED: 1-11W LED array, 1550 lumens, 300K, 80CRI or, 1-16W LED array, 2120 lumens, 3000K, 80CRI. LED array is included, is mounted in a holder and is replaceable.

BALLAST/DRIVER

CF: Integral electronic HPF, 120V/277V.

LED: Integral HPF electronic driver, 120/277, 0-10V dimming. 2-wire triac dimming available for 120V.

ECO INFO

METALS: Hood is made from bronze with 90% recycled content or for painted finishes, aluminum with 30-40% recycled content. Backplate is made from 100% recycled aluminum. All metals are valuable and recyclable at the end of the product's useful life. For more information see "GENERAL INFO"

FINISHING: Solid, natural metal finishes are hand satined. No paint or lacquer is used in order to avoid pollution associated with the manufacture and application of these substances. Paint finishes are low VOC and oven cured..

ENERGY: Designed exclusively for compact fluorescent lamps using HPF electronic ballasts or LEDs.

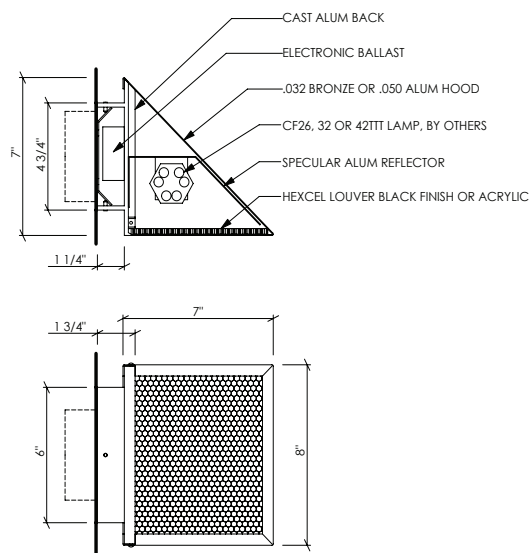


999 Montague St • San Leandro, CA 94577 • ph 510.357.0171 • fax 510.357.3832 • www.bordenlighting.com



Shown in Satin SS with standard acrylic lens.

720



OPTIONS

LENS: High transmission clear refractive acrylic is standard. For optional hexcel louver, specify **HXL**.

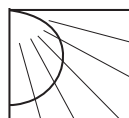
NOTE: The optional hexcel open cell louver offers lower glare with higher output directly below the fixture, but less light to the sides and front.

EMERGENCY BATTERY PACK: Remote mounted EBP, specify **REM**. Not available for **LED**.

MOUNTING: Standard J-box or plaster ring.

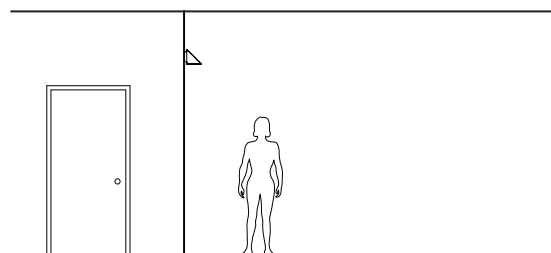
WEIGHT: 5 lbs

NOTE: This fixture is suitable for wet or dry locations. For wet locations use only as a downlight.



PHOTOMETRICS

Lighting Sciences Report No. 26216
Fixture Efficiency: 32.7% for CF1/26.
LSI Report No. 27865 for 18W LED rated for 1200 lumens. The 16W array is rated for 2120 lumens, producing 77% more light. Adjust light levels accordingly.



VARIATIONS / MODIFICATIONS

- Special finishes
- Special sizes

NOTE: Standard electronic ballast is multi-volt and multi-wattage. Fixture will accommodate 26, 32 or 42 watt lamps. (Ballast for 13w will only operate 13w lamp.)

SPEC GUIDE SAMPLE SPEC: 720-CF1/26-120-SGB-HXL

CAT#	-	LAMPING	-	VOLT	-	FINISH	-	OPTION
<input type="checkbox"/> 720		<input type="checkbox"/> CF1/13		<input type="checkbox"/> 120		<input type="checkbox"/> NBZ		<input type="checkbox"/> HXL
		<input type="checkbox"/> CF1/26		<input type="checkbox"/> 277		<input type="checkbox"/> SSS		
		<input type="checkbox"/> CF1/32				<input type="checkbox"/> CAA		
		<input type="checkbox"/> CF1/42				<input type="checkbox"/> SGB		
		<input type="checkbox"/> LED/11				<input type="checkbox"/> SGW		
		<input type="checkbox"/> LED/16				<input type="checkbox"/> SGBZ		

Learn more about
Natural Bronze
[click here](#)



999 Montague St • San Leandro, CA 94577 • ph 510.357.0171 • fax 510.357.3832 • www.bordenlighting.com



IBEW Labelled



Our fixtures are handcrafted here in the USA using the highest quality materials.