

UPDATED 8/15

**719 LED** Opt. New improved LED array & dimming driver.

## WEDGE DOWNLIGHT WET LOCATION

Design  
Sustainability  
Value



print this page



email this page to a colleague



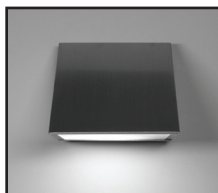
installation instructions



interactive submittal drawing



Shown in Natural Bronze with optional hexcel louver.



### COMPANION



### FEATURES

- Smaller version of 720.
- Solid bronze or stainless steel construction ensures long life.
- Cutoff design combined with low glare.
- Part of a family of four different sizes.

### MATERIALS

- Solid bronze or stainless steel hood. Aluminum is used for painted finishes. Cast aluminum backplate is painted to match hood finish.
- High transmission clear refractive acrylic lens.
- Aluminum hexcel louver.

### FINISHES

**NBZ** Natural Bronze  
**SSS** Satin Stainless Steel  
**SGB** Semi-Gloss Black  
**SGW** Semi-Gloss White  
**SGBZ** Semi-Gloss Bronze

**CCP** Custom Color Painted finish  
**CAA** Clear Anodized Aluminum  
**SGS** Semi-Gloss Silver

*Learn more about  
Natural Bronze  
click here*

### LAMPING

CF: 1 CF13DTT, G24q base or 1-CF18WTTT, 2Gx24q.

Lamps not included.

LED: 1-11W array, 1550 lumens or 1-16W, 2120 lumens. Both are 3000K & 80+ CRI. LED array is included and easily changed.

### BALLAST/DRIVER

CF: Integral electronic HPF, 127/277V.

LED: Integral HPF electronic driver, 120/277 volt, 0-10V dimming. 2-wire triac dimming available for 120V.

### ECO INFO

**METALS:** Hood is made from bronze with 90% recycled content or for painted finishes, aluminum with 30-40% recycled content. Backplate is made from 100% recycled aluminum. All metals are valuable and recyclable at the end of the product's useful life. For more information see "GENERAL INFO"

**FINISHING:** Solid, natural metal finishes are hand satined. No paint or lacquer is used on the hood in order to avoid pollution associated with the manufacture and application of these substances. Paint finishes are low VOC and oven cured..

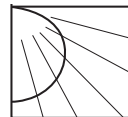
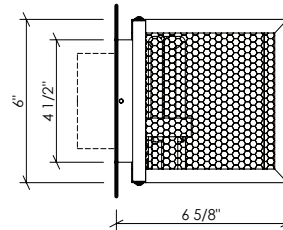
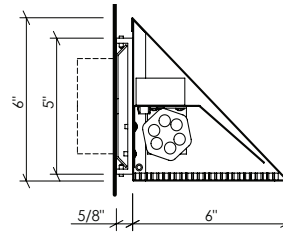
**ENERGY:** Designed exclusively for compact fluorescent lamps using electronic ballasts or LEDs.



999 Montague St • San Leandro, CA 94577 • ph 510.357.0171 • fax 510.357.3832 • [www.bordenlighting.com](http://www.bordenlighting.com)

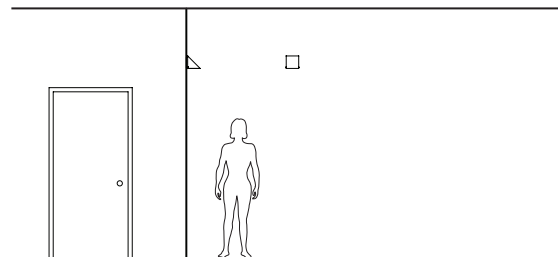


719



#### PHOTOMETRICS

CF: Use LSI Report No. 26216 for model 720, adjusting for 33% less lumens.  
LED: Light Lab Report NO LLI-15174-1 was tested with a 12W LED rated at 1350lm; new LED is rated at 11W and 1550lm or 17% more. Adjust light levels accordingly.



#### VARIATIONS / MODIFICATIONS

- Special finishes
- Special sizes

#### OPTIONS

**LENS:** High transmission clear refractive acrylic is standard. For optional hexcel louver, specify **HXL**.

**NOTE:** The optional hexcel open cell louver offers lower glare with higher output directly below the fixture, but less light to the sides and front.

**EMERGENCY BATTERY PACK:** Remote mounted EBP, specify **REM**. Not available for **LED**.

**NOTE:** This fixture is suitable for wet or dry locations. For wet locations use only as a downlight.

**MOUNTING:** Standard J-box or plaster ring.

**WEIGHT:** 4 lbs

## SPEC GUIDE

SAMPLE SPEC: 719-CF1/18-120-NBZ-HXL

CAT#	-	LAMPING	-	VOLT	-	FINISH	-	OPTION
<input type="checkbox"/> 719		<input type="checkbox"/> CF1/13		<input type="checkbox"/> 120		<input type="checkbox"/> NBZ		<input type="checkbox"/> HXL
		<input type="checkbox"/> CF1/18		<input type="checkbox"/> 277		<input type="checkbox"/> SSS		<input type="checkbox"/> REM
		<input type="checkbox"/> LED/11				<input type="checkbox"/> SGB		
		<input type="checkbox"/> LED/16				<input type="checkbox"/> SGW		
						<input type="checkbox"/> SGBZ		
						<input type="checkbox"/> CCP		

Learn more about  
Natural Bronze  
[click here](#)



IBEW Labelled



Our fixtures are handcrafted here in the USA using the highest quality materials.



999 Montague St • San Leandro, CA 94577 • ph 510.357.0171 • fax 510.357.3832 • [www.bordenlighting.com](http://www.bordenlighting.com)