

UPDATED 8/15

710 LED Opt. New improved LED array & dimming driver.

DOME DOWNLIGHT
WET LOCATION

Design
Sustainability
Value



print this page



email this page to a colleague



installation instructions

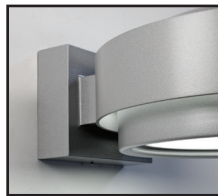


interactive submittal drawing

DESIGN: RANDY BORDEN



Shown with SGBZ paint finish.



FEATURES

- Low glare downlight with play of light on outer ring
- Unique shape.
- Suitable for wet or dry locations.
- Available with LEDs.

MATERIALS

- Solid aluminum metal work.
- High transmission clear refractive acrylic.
- Aluminum hexcel louver.

FINISHES

- SGB** Semi-gloss black
- SGW** Semi-gloss white
- SGS** Semi-gloss silver
- SGBZ** Semi-gloss bronze
- CCP** Custom Color Painted finish

LAMPING

CF: 1-CF26W, 32W or 42WTTT Gx24q base.

Lamps not included.

LED: 1-16W LED array; 2120 lumens, 3000K, 80 CRI. LED array is included and is replaceable.

BALLAST/DRIVER

Integral electronic ballast and driver, both 120V/277V.

Driver is 0-10V dimmable. 2-wire triac dimming available for 120V.

ECO INFO

METALS: Cast mounting back is made from 100% recycled aluminum. Other aluminum parts have the highest available recycled content for lower embodied energy. All metals are valuable and recyclable at the end of the product's useful life. For more information see "GENERAL INFO"

FINISHING: Paint finishes are low VOC and oven cured.

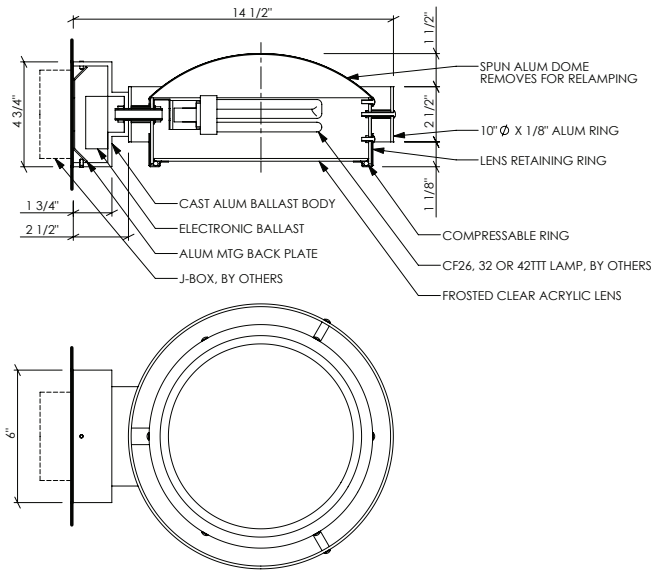
ENERGY: Designed exclusively for low energy compact fluorescent lamps, using HPF electronic ballasts or LED's with integral driver.





Shown with SGB paint finish.

710 WET LOCATION



OPTIONS

LENS: High transmission clear refractive acrylic, or optional hexcel louver. Specify **HXL**

NOTE: The optional hexcel open cell louver offers lower glare with higher output directly below the fixture, but less light to the sides and front.

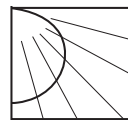
PHOTOCELL: Photocell available, specify **PH**.

EMERGENCY BATTERY PACK: Remote mounted EBP, specify **REM**. Not available for **LED**.

CF NOTE: Standard electronic ballast is multi-volt and multi-wattage. Fixture will accommodate 26, 32 or 42 watt lamps.

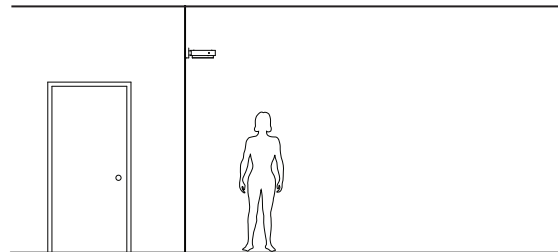
MOUNTING: Standard J-box or plaster ring.

WEIGHT: 5 lbs



PHOTOMETRICS

Lighting Sciences Report No. 23007
 Fixture Efficiency: 31.9%
 Tested with 1-CF32W rated at 2400lm. Distribution for LEDs is the same; adjust lumens accordingly.



VARIATIONS / MODIFICATIONS

- Special finishes
- Addition of decorative detail

SPEC GUIDE SAMPLE SPEC: 710-CF1/26-120-SGB-HXL

CAT#	LAMPING	VOLT	FINISH	OPTION
<input type="checkbox"/> 710	<input type="checkbox"/> CF1/26	<input type="checkbox"/> 120	<input type="checkbox"/> SGB	<input type="checkbox"/> HXL
	<input type="checkbox"/> CF1/32	<input type="checkbox"/> 277	<input type="checkbox"/> SGW	<input type="checkbox"/> PH
	<input type="checkbox"/> CF1/42		<input type="checkbox"/> SGS	<input type="checkbox"/> REM
	<input type="checkbox"/> LED/16		<input type="checkbox"/> SGBZ	
			<input type="checkbox"/> CCP	



Our fixtures are handcrafted here in the USA using the highest quality materials.

