

104-14 LED Optional

104-18 IEM LED

DRUM DOWNLIGHT

Design
Sustainability
Value



Shown in satin aluminum.



print this page



email this page to a colleague



installation instructions



interactive submittal drawings

COMPANIONS



FEATURES

- Classic drum shape available with a variety of hand finished natural metals.
- Available in two sizes with a variety of lamping options including LED.
- 18" size available with an integral emergency battery pack.

MATERIALS

- Solid brass, bronze or aluminum metal work, hand finished.
- White acrylic bottom lens.

FINISHES

- | | |
|--|----------------------------------|
| SAL Satin Aluminum | SBZ Satin Bronze |
| SB Satin Brass | OXBZ Oxidized Bronze |
| AB Antique Brass | SSS Satin Stainless Steel |
| CCP Custom Color Painted finish | MW Matte White |

Standard metal finishes are hand stained and either waxed or sealed with a water-based clear coat. Other metal finishes are available. Contact factory.

LAMPING

CF: 104-14: 2-CF13QTT, G24q base or 2-26TTT, Gx24q base.
104-18: 2-26, 32 or 42WTTT, Gx24q base.

LED: 104-14 & 104-18: 2-GU24 base LED A-lamps, 12W, 1100 lumens each, 3000K, supplied.

BALLAST/DRIVER

CF: Integral electronic HPF, 120V/277V.

LED: Electronic driver is built into the lamp, 120V only.

Dimmable to 10% with most incandescent dimmers.

ECO INFO

METALS: All metals have the highest available recycled content for lower embodied energy; all metals are valuable and recyclable at the end of the product's useful life. For more information see our website.

FINISHING: Aluminum, Antique Brass and Oxidized Bronze sealed with a hand-applied bees wax. No paint or lacquer is used in order to avoid pollution associated with manufacture and application of these substances. Satin Brass and Bronze are clear-coated with a very low VOC water-based coating. Paint finishes are low VOC and oven cured.

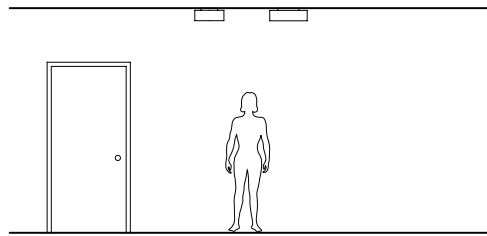
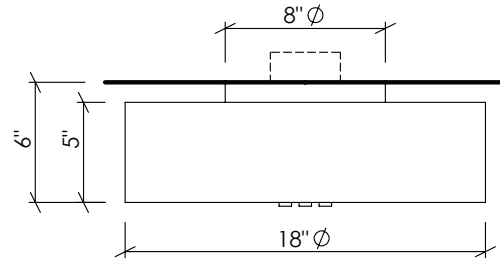
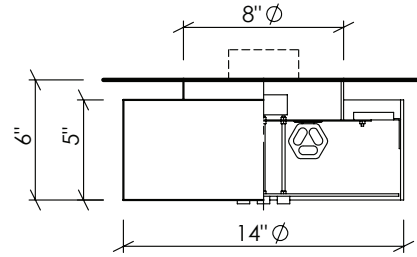
ENERGY: Designed exclusively for T5 circline fluorescent lamps using HPF electronic ballasts or LEDs.





Shown in satin bronze.

104-14 104-18



OPTIONS

DIMMING: CF: Lutron & Advance dimming available.

LED: Triac dimmable to 10%.

EMERGENCY BATTERY PACK: Remote mounted EBP for 104-14. Integral EBP available for 108-18, specify **IEM**.

MOUNTING: Standard J-box or plaster ring.

WEIGHT: 5 lbs

VARIATIONS / MODIFICATIONS

- Special finishes
- Addition of decorative detail

SPEC GUIDE

SAMPLE SPEC: 104-18-CF2/32-277-SBZ-IEM

CAT#	SIZE	LAMPING	VOLT	FINISH	OPTION
<input type="checkbox"/> 104	<input type="checkbox"/> 14 <input type="checkbox"/> 18	<input type="checkbox"/> CF2/13 <input type="checkbox"/> CF2/26 <input type="checkbox"/> CF2/32 <input type="checkbox"/> CF2/42 <input type="checkbox"/> LED2/12	<input type="checkbox"/> 120 <input type="checkbox"/> 277 <input type="checkbox"/> 120DIM	<input type="checkbox"/> SAL <input type="checkbox"/> SB <input type="checkbox"/> AB <input type="checkbox"/> SBZ <input type="checkbox"/> OXBZ <input type="checkbox"/> SSS <input type="checkbox"/> CCP <input type="checkbox"/> MW	<input type="checkbox"/> IEM



999 Montague St • San Leandro, CA 94577 • ph 510.357.0171 • fax 510.357.3832 • www.bordenlighting.com



**LIGHTING
FIXTURES**



Our fixtures are handcrafted here in the USA using the highest quality materials.