

UPDATED 3/15

**103-14 LED** Optional

**103-18 IEM LED** Optional

**FABRIC SHADE DRUM**

Design  
Sustainability  
Value



Shown with cream linen shade.



print this page



email this page to a colleague



installation instructions



interactive submittal drawing



application photos

#### COMPANIONS



303



503

#### FEATURES

- Classic drum shape available with a variety of fabric shades.
- Available in two sizes with a variety of lamping options, including LED.
- 18" size available with an integral emergency battery pack.

#### ECO INFO

**ENERGY:** Designed exclusively for compact fluorescent lamps using HPF electronic ballasts or LEDs.

**FABRIC SHADE:** Available with sustainability produced fabrics that are backed with a US made paper backing, that replaces the standard styrene backing. See OPTIONAL FABRICS on Pg. 2.

#### MATERIALS

- Fabric drum shade.
- White acrylic bottom lens.

#### FINISHES

**MW** Matte White

**CCP** Custom Color Painted finish

Paint finishes are low voc.

#### LAMPING

**CF:** 103-14: 2-CF13QTT, G24q base or 2-26TTT, Gx24q base.  
103-18: 2-26, 32 or 42WTTT, Gx24q base.

**LED:** 103-14 & 103-18: 2-GU24 base LED A-lamps, 12W, 1100 lumens each, 3000K, supplied.

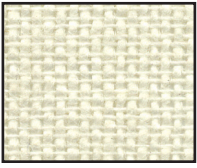
#### BALLAST/DRIVER

**CF:** Integral electronic HPF, 120V/277V.

**LED:** Electronic driver is built into the lamp, 120V only.

Dimmable to 10% with most incandescent dimmers.

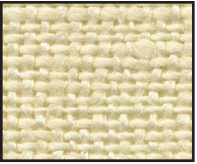




**STANDARD FABRIC**  
Cream Linen

NOTE: All fabrics shown greater than actual size.

**OPTIONAL FABRICS:** Imported 100% flax linen.



VAN Vanilla

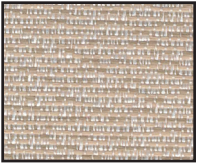


WHT White



OAT Oatmeal

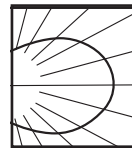
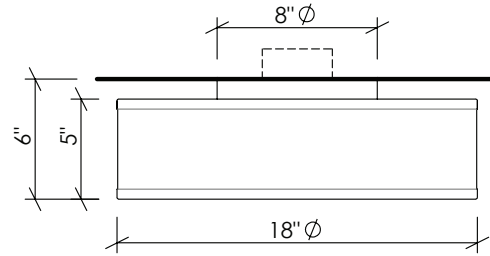
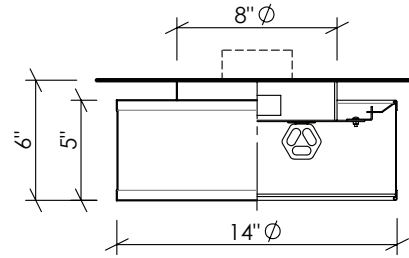
**OPTIONAL ECO-FABRICS:**



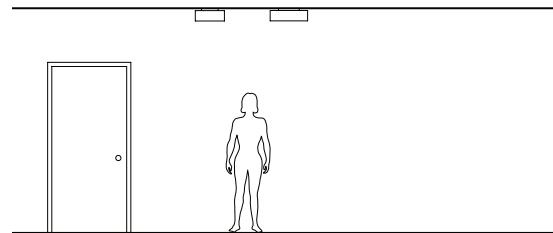
DOV  
Dove Polyester  
Washable 65% recycled content

Click **HERE** to learn more about shade fabrics

**103-14**  
**103-18**



**PHOTOMETRICS**  
Lighting Sciences Report 29922  
Fixture Efficiency: 68.0%



**OPTIONS**

**DIMMING:** Lutron & Advance dimming available.  
**LED:** Triac dimmable to 10%.

**EMERGENCY BATTERY PACK:** Remote mounted EBP for 103-14. Integral EBP available for 103-18, specify **IEM**. Not available for **LED**.

**FABRIC SHADE:** Standard, or default, shade is Cream Linen. Optional shade fabrics are shown above. Call factory for other fabrics.

**MOUNTING:** Standard J-box or plaster ring.

**WEIGHT:** 5 lbs

**VARIATIONS / MODIFICATIONS**

- Special finishes
- Special shade fabrics
- Addition of decorative detail

**SPEC GUIDE**

SAMPLE SPEC: 103-18-CF2/32-277-SAL-VAN-IEM

| CAT#                         | SIZE   | LAMPING  | VOLT  | FINISH  | OPTION  |
|------------------------------|--|--|---|---|---|
| <input type="checkbox"/> 103 | <input type="checkbox"/> 14<br><input type="checkbox"/> 18 | <input type="checkbox"/> CF2/13<br><input type="checkbox"/> CF2/26<br><input type="checkbox"/> CF2/32<br><input type="checkbox"/> CF2/42<br><input type="checkbox"/> LED2/12 | <input type="checkbox"/> 120<br><input type="checkbox"/> 277<br><input type="checkbox"/> 120DIM | <input type="checkbox"/> SAL<br><input type="checkbox"/> MW<br><input type="checkbox"/> CCP | <input type="checkbox"/> IEM<br><input type="checkbox"/> VAN (Vanilla)<br><input type="checkbox"/> WHT (White)<br><input type="checkbox"/> OAT (Oatmeal)<br><input type="checkbox"/> DOV (Dove Polyest) |



Our fixtures are handcrafted here in the USA using the highest quality materials.

