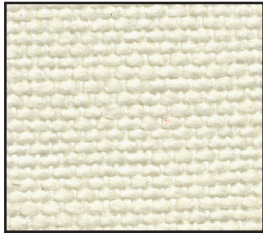
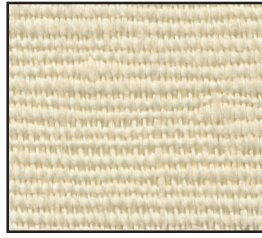


FABRICS



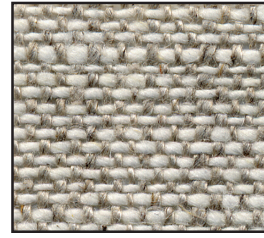
CRM
Cream Linen
Standard Fabric



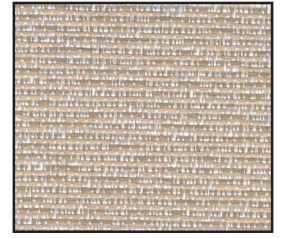
VAN
Vanilla Linen



WHT
White Linen

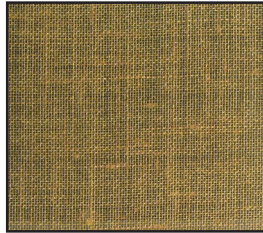


OAT
Oatmeal Linen

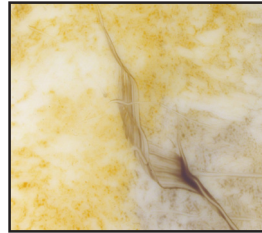


DOV
Dove Polyester

OPTIONAL ACRYLIC DIFFUSERS



3LW
3G Linen Wheat



FAUX
Faux Alabaster

METAL FINISHES

Our most prevalent metal finish is Satin Aluminum. The base metal finish is hand satined (aka brushed) and sealed with wax. This allows the natural luster and depth of the metal to come through. It is also a very sustainable finish in that the base metal has high recycled content and it avoids the application of paint or clear coats, both of which have water and air impacts. Our brass, bronze and stainless steel finishes are hand finished base metal finishes as well. The base metals for all of these finishes have high recycled content. For some fixtures, primarily vanity fixtures, we offer plated chrome finishes upon request. Depending on the fixture, other plated finishes are available - call the factory or your rep.

PAINTED METAL FINISHES

Our painted metal finishes are either powder coated or low VOC liquid coatings. For interior fixtures we offer a "matte" finish. This is what in the industry is known as 15 degrees off flat and what would be considered an eggshell finish in wall paint. For exterior fixtures we offer a "semi-gloss" finish which is more durable against the weather.

Our standard colors are shown on the facing page. We offer an optional muted pallet that is also shown opposite. These sophisticated colors are intended to be compatible with contemporary spaces and have been selected by a color consultant. Rather than

offer a RAL palette, we offer "Custom Colors." We are happy to match any selected color. We do ask that a "color chip" be supplied to avoid the errors that occur with transmitting color numbers.

FABRICS

Our standard, or default, fabric is Cream Linen. Optional linen fabrics are shown above. We also offer an "Eco Fabric," Dove Polyester. This fabric has 65% recycled content and is washable. Fabric, like color, is almost endless. We are happy to source special fabrics or to use fabrics that are "owner supplied". Call the factory or your rep.

LUMINOUS ACRYLICS

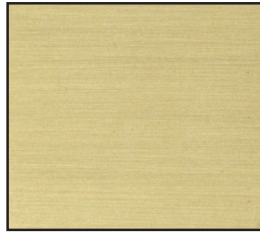
Our standard white acrylic is known as "lighting white," transmitting 50% of the light. For most of our fixtures, the outside finish is a sanded or matte finish. Some fixtures are offered with "Satin Ice," an acrylic that has a frosted finish and transmits over 80% of the light. For many fixtures we offer a Faux Alabaster, hand-painted finish applied to the white acrylic. Our standard faux mixes warm and cool colors, but can be tailored to warm or cool by request. We also offer for some drum shaped fixtures with 3-Form laminated acrylic with a linen inter layer.

METAL FINISHES

INTERIOR BASE METAL FINISHES



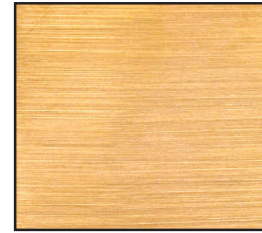
SAL
Satin Aluminum



SB
Satin Brass



AB
Antique Brass



SBZ
Satin Bronze



SSS
Satin Stainless Steel

INTERIOR STANDARD PAINTED FINISHES



MW
Matte White



MB
Matte Black

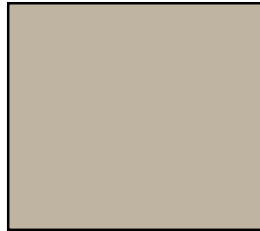


MBZ
Matte Bronze

INTERIOR OPTIONAL PAINTED FINISHES



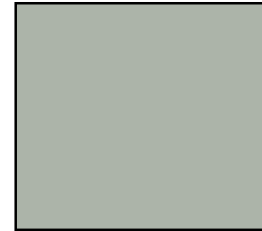
BUF
Buff



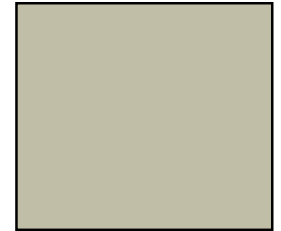
BGE
Beige



GRY
Gray



GRN
Green



GRS
Grassland

EXTERIOR BASE METAL FINISHES



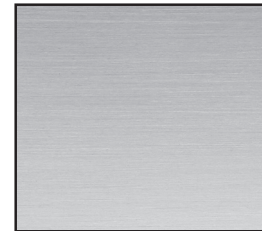
NBZ(Factory bright)
Natural Bronze



Natural Bronze
with weathered patina



SSS
Satin Stainless Steel

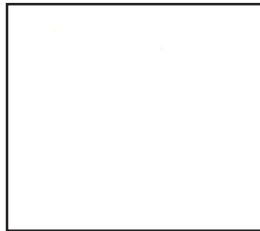


CAA
Clear Anodized Aluminum

EXTERIOR PAINTED FINISHES



SGB
Semi-Gloss Black



SGW
Semi-Gloss White



SGS
Semi-Gloss Silver



SGBZ
Semi-Gloss Bronze