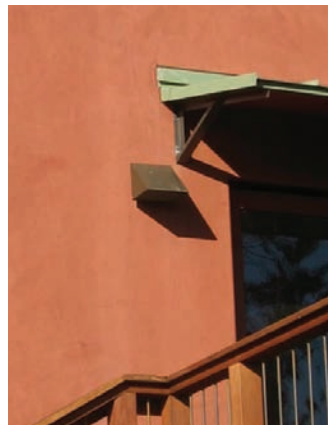


## THE WEDGE FAMILY

The introduction of our 718 fixture completes our wedge family of exterior wall mounted fixtures. With four different sizes now available there is a wedge to meet most residential, institutional and commercial applications. The 718 meets ADA requirements, but for many exterior applications you can meet ADA by setting the bottom of the fixture at 6'-8" high. The 719 and 720 offer slightly different scales for residential or commercial projects. The 721 is available with an integral emergency battery pack (IEM) to meet outdoor egress requirements.

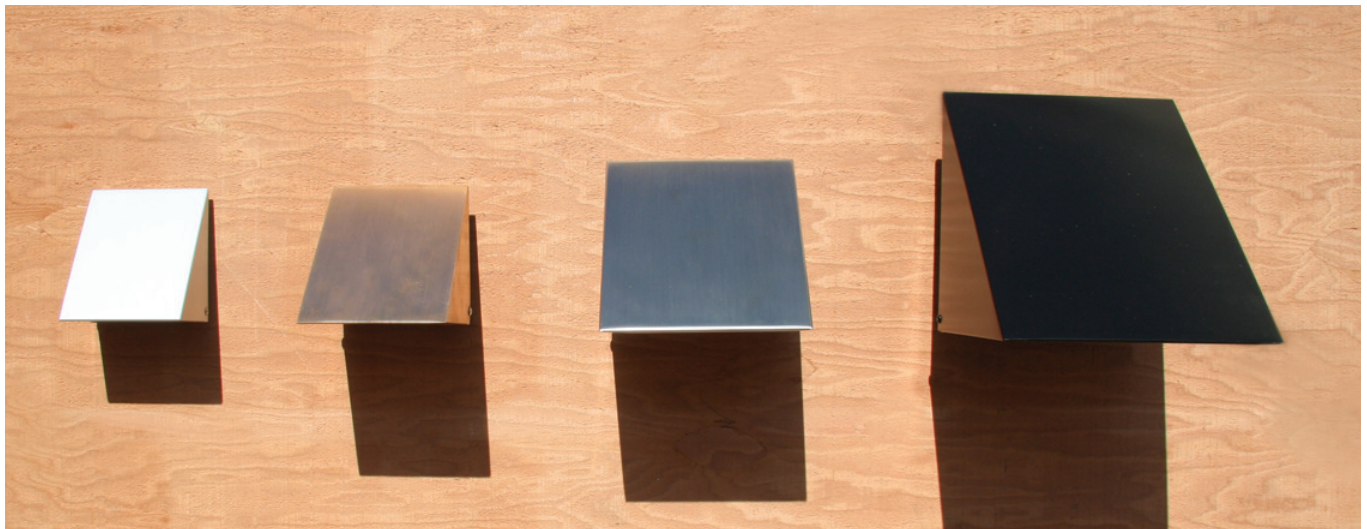


All four fixtures are available with LED or CF lamping. The 721 is available with metal halide.

The wedge family is one of the best examples of sustainability in light fixtures. All utilize a cast aluminum mounting back that is cast from 100% recycled aluminum. In a Natural Bronze finish the bronze is made from 90% recycled material, resulting in a light fixture with very low embedded energy.



E-mail a question or comment.



718: Shown in Clear Anodized Alum.

719: Shown in Natural Bronze

720: Shown in Satin Stainless Steel

721: Shown in Semi-Gloss Black